

INDOOR UNIT

Ceiling cassette type

4-way airflow

PLFY-P VBM-E *i-see Sensor*

PLFY-P VCM-E



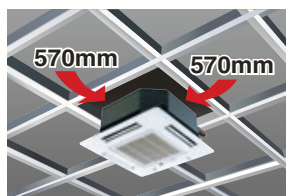
PLYF-P VBM

PLYF-P VCM

The new 4-way cassette VBM offers 72 different airflow patterns, making it ideal for applications with ceilings up to 4.2 m (13-13/16ft) in height.



Compact body to match with 2 feet (600mm) x 2 feet (600mm) ceiling design (VCM)



Automatic Air Speed Adjustment

Auto-fan-speed mode enables speedy and comfortable heating during heating startup.

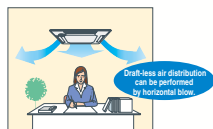
The Auto-fan-speed mode is added to the usual four steps "Low, Mid1, Mid2, High." The Auto-fan-speed mode enables speedy and comfortable air conditioning because the air flow speeds up when starting, and air flow slows down when the air conditioning becomes stable. (PLFY-P VBM-E ONLY)



*When using a wireless remote controller, initial settings are required.

Draft-less Air Distribution

The horizontal blow mode* newly employed supplies airflow horizontally not bringing cooled/warmed air directly to occupants thus preventing discomfort sensation due to excessive cooling or direct exposing of occupants to the air blow. (PLFY-P VBM-E ONLY)



*Default
*The ceiling may be smudged at a spot where the supplied airflow is seriously disturbed.

Wide Air Flow (PLFY-P VBM-E ONLY)

Cooling softly with Wide Air Flow

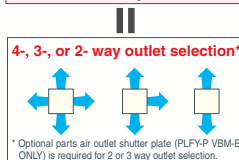
Discharge air reaches wider area and the fan speed is decreased by 20% thanks to the new wide shape air outlet.



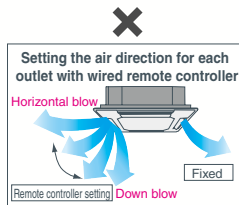
72 patterns of airflow to accommodate any room layout are available.

The number of outlet can be set to 4, 3, or 2. Flexible airflow is available by fixing the up-down airflow direction of the outlet with a wired remote controller (or manually).

72 airflow patterns



* Optional parts air outlet shutter plate (PLFY-P VBM-E ONLY) is required for 2 or 3 way outlet selection.

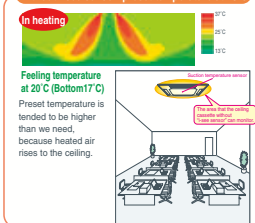


"i-see sensor" can be used with ceiling cassette type 4-way airflow unit. (Option PAC-SA1ME-E, PLYF-VBM-E ONLY)

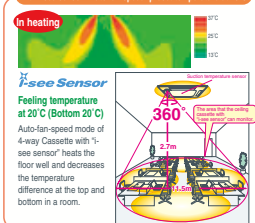
New 4-way Cassette PLYF-VBM controls the temperature difference at the top and bottom in a room by checking the floor temperature with "i-see sensor". Comfortable air conditioning can be realized smoothly with "sensible temperature control." (Option PAC-SA1ME-E, PLYF-VBM-E ONLY)

Prevents overcooling/overheating, and improves comfort/energy-efficiency

Without i-see sensor: preset temperature at 23°C



With i-see sensor+Auto fan speed: preset temperature at 20°C



► Specifications

		PLFY-P32VBM-E	PLFY-P40VBM-E	PLFY-P50VBM-E	PLFY-P63VBM-E	PLFY-P80VBM-E	PLFY-P100VBM-E	PLFY-P125VBM-E
Power source		1-phase 220-240V 50Hz / 1-phase 200V 60Hz						
Cooling capacity	#1 kW	3.6	4.5	5.6	7.1	9.0	11.2	14.0
	#1 BTU/h	12,300	15,400	19,100	24,200	30,700	38,200	47,800
Heating capacity	#1 kW	4.0	5.0	6.3	8.0	10.0	12.5	16.0
	#1 BTU/h	13,600	17,100	21,500	27,300	34,100	42,700	54,600
Power consumption	Cooling kW	0.03	0.04	0.05	0.07	0.15	0.16	
	Heating kW	0.02	0.03	0.04	0.06	0.14	0.15	
Current	Cooling A	0.22	0.29	0.36	0.51	1.00	1.07	
	Heating A	0.14	0.22	0.29	0.43	0.94	1.00	
External finish (Munsell No.)	Unit	Galvanized steel sheet						
	Panel	White (6.4Y 8.9/0.4)						
Dimension H X W X D	Unit	mm(in.)						
	Panel	258 x 840 x 840 (10-3/16 x 33-8/1 x 33-8/1) 298 x 840 x 840 (11-3/4 x 33-13/8 x 33-13/8)						
Net weight	Unit	mm(in.)						
	Panel	35 x 950 x 950 (1-3/8 x 37-7/16 x 37-7/16)						
Heat exchanger	Unit	kg(lbs.)						
	Panel	22 (49) 23 (51) 27 (60)						
Fan	Type X Quantity	Cross fin (Aluminum plate fin and copper tube)						
	Airflow rate (Lo-Mid-Hi) #2	Turbo fan x 1						
Motor	Type	0						
	Output	DC motor						
Air filter	Unit	kW						
	Panel	0.050 0.120						
Refrigerant pipe diameter	Gas (Flare)	PP Honeycomb						
	Liquid (Flare)	ø12.7 (ø1/2) ø15.88 (ø5/8) ø19.05 (ø3/4)						
Field drain pipe diameter	Unit	mm(in.)						
	Panel	6.35 (ø1/4) ø9.52 (ø3/8) ø12.7 (ø1/2)						
Sound pressure level (Lo-Mid-Hi) #2 #3	Unit	dB(A)						
	Panel	27-28-29-31 27-28-30-31 28-29-30-32 30-32-35-37 34-37-39-41 35-38-41-43						

Power source		PLFY-P20VCM-E		PLFY-P25VCM-E		PLFY-P32VCM-E		PLFY-P40VCM-E		
Cooling capacity	# 1	kW	2.2		2.8		3.6		4.5	
	# 1	BTU/h	7,500		9,600		12,300		15,400	
Heating capacity	# 1	kW	2.5		3.2		4.0		5.0	
	# 1	BTU/h	8,500		10,900		13,600		17,100	
Power consumption	Cooling	kW	0.05		0.05		0.06		0.06	
	Heating	kW	0.05		0.05		0.06		0.06	
Current	Cooling	A	0.23		0.23		0.28		0.28	
	Heating	A	0.23		0.23		0.28		0.28	
External finish (Munsell No.)		Unit	Galvanized steel sheet with gray heat insulation							
		Panel	White (6.4Y 8.9/0.4)							
Dimension H X W X D	Unit	mm(in.)	208 X 570 X 570 (8-1/4 X 22-1/2 X 22-1/2)							
	Panel	mm(in.)	20 X 650 X 650 (13/16 X 25-5/8 X 25-5/8)							
Net weight	Unit	kg(lbs)	15.5 (35)				17 (38)			
	Panel	kg(lbs)	3 (7)				3 (7)			
Heat exchanger		Cross fin (Aluminum plate fin and copper tube)								
Fan	Type X Quantity	Turbo fan X 1								
	Airflow rate # 2 (Lo-Mid-Hi)	m³/min	8-9-10		8-9-10		8-9-11		8-9-11	
		L/s	133-150-167		133-150-167		133-150-183		133-150-183	
		cfm	283-318-353		283-318-353		283-318-388		283-318-388	
	External static pressure	Pa	0 (direct blow)							
Motor	Type	1-phase induction motor								
	Output	kW	0.011		0.015		0.02		0.02	
Air filter		PP Honeycomb (long life type)								
Refrigerant pipe diameter	Gas(Panel)	mm(in.)	ø12.7 (ø1/2)							
	Liquid(Panel)	mm(in.)	ø6.35 (ø1/4)							
Field drain pipe diameter		mm(in.)	O.D. 32 (1-1/4)							
Sound pressure level (Lo-Mid-Hi) #2 #3		dB(A)	28-31-35		28-31-37		29-33-38		30-34-39	

Note:

- #1 Cooling/Heating capacity indicates the maximum value at operation under the following condition.
Cooling : Indoor 27°C(81°F)DB/19°C(66°F)WB, Outdoor 35°C(95°F)DB
Heating : Indoor 20°C(68°F)DB, Outdoor 7°C(45°F)DB/6°C(43°F)WB
- #2 Airflow rate/Sound pressure level are in (low-middle-high) or (low-middle1-middle2-high).
- #3 It is measured in anechoic room at power source 230V.